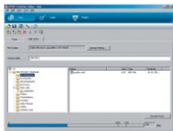


Working with the Epson Discproducer™ is as easy as working with an ordinary office printer. Simply compile your data, compose an image, configure the run, click “OK”... and it's done. You're free to get on with other things.

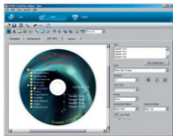
#### Step 1: Compile data

The Epson Discproducer's software (Disc Editing view) works like standard programs for burning data on digital storage media. After indicating whether you're burning music, videos or data to the disc, you simply load the data and save it to an easily created folder. It's quick and it's simple, so you don't need to be an expert – it can be done by novices and technophobes.



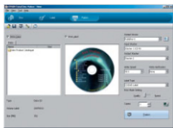
#### Step 2: Composing the print image

Composing your own CD/DVD image is easy, using the Epson Discproducer's software (Label Editing view). You can either let your creativity run wild, or use one of the many pre-defined templates and images provided. The integral preview display lets you check your composition, and – when you're happy – you can save your work for easy retrieval in the future.



#### Step 3: Configuring production

These are the last few simple steps before pressing Go. The Epson Discproducer's software (Publishing view) leads you through the process, helping you to set parameters such as the number of CDs or DVDs to be burned, the burning and print speed, the in/out trays for discs, and print resolution. Then simply press “Publish” – and your production run is on its way.



#### Monitoring system reliability

The Epson Discproducer's Monitoring Software keeps you informed about all important parameters, such as tray status and pending jobs. This helps you choose whether to let your production run continue unattended, and protects you against any unexpected interruptions – especially useful when you're working against a tight deadline.



**DVD-and-Media.com**

THE HOME OF RECORDABLE MEDIA AND BLURAY TECHNOLOGY